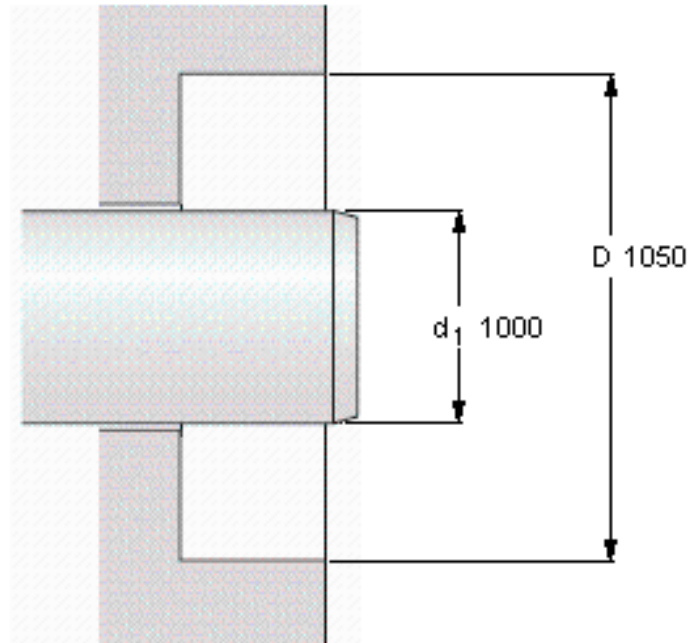


SKF 1000X1050X23 HDS2 R1参数

主要尺寸	d ₁	1000	mm	-
	d1	1050	mm	-
	b	23	mm	-
设计	设计	HDS2	-	-
密封唇材料	密封唇材料	R	-	-
Pressuredifferential [MPa/psi]	Pressure differential [MPa / psi]	0.1		-
型号	型号	1000X1050X23 HDS2 R1	-	-
美国图纸编号	美国图纸编号	3937565	-	-
注释	注释	带6个4 mm长的固定凸 缘	-	-

SKF 1000X1050X23 HDS2 R1图片



Permissible operating temperature [°C / °F]

最小	最大
-40 / -40	100 / 212
	short periods
	120 / 248

Rotational speed [r/min]

477
at circumferential speed [m/s / ft/s]
 25 / 82

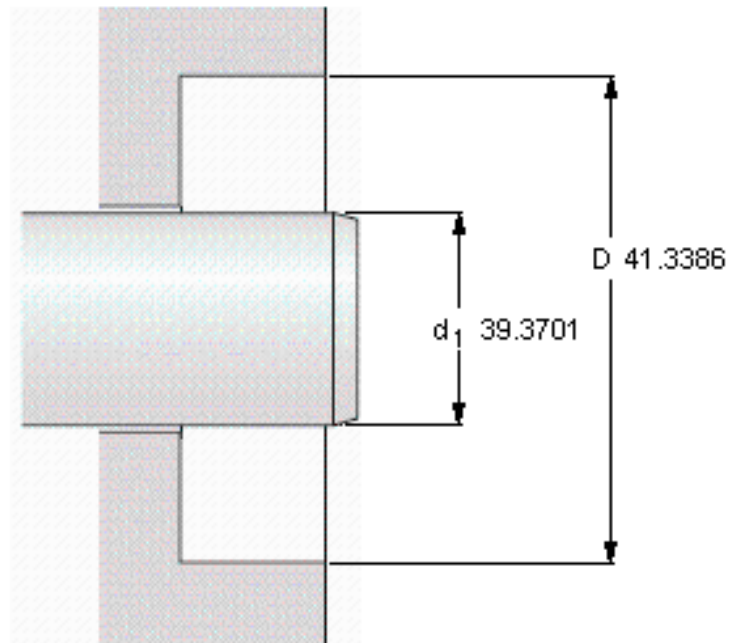
Pressure differential [MPa / psi]

0,1 / 14,5

See also "Permissible speeds" and "Chemical and thermal resistance"

参考资料: <http://www.sozhou.com/p/4d516bcf.html>

b 0.9055



Permissible operating temperature [°C / °F]

最小

-40 / -40

最大

100 / 212

short periods

120 / 248

Rotational speed [r/min]

477

at circumferential speed [m/s / ft/s]

25 / 82

Pressure differential [MPa / psi]

0,1 / 14,5

See also "Permissible speeds" and "Chemical and thermal resistance"