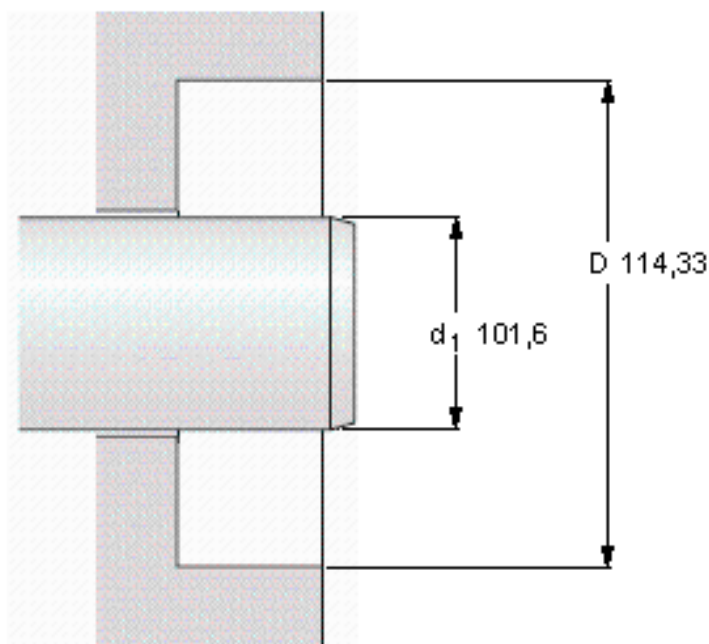


SKF 39835参数

主要尺寸	$d_1$	101.6	mm	-
	d1	114.33	mm	-
	b	6.35	mm	-
设计	设计	HM14	-	-
密封唇材料	密封唇材料	R	-	-
Pressuredifferential [MPa/psi]	Pressure differential [MPa / psi]	0.02	-	-
型号	型号	39835	-	-
美国图纸编号	美国图纸编号	39835	-	-

SKF 39835图片



**Permissible operating temperature [°C / °F]**

<b>最小</b>	<b>最大</b>
-40 / -40	100 / 212
	short periods
	120 / 248

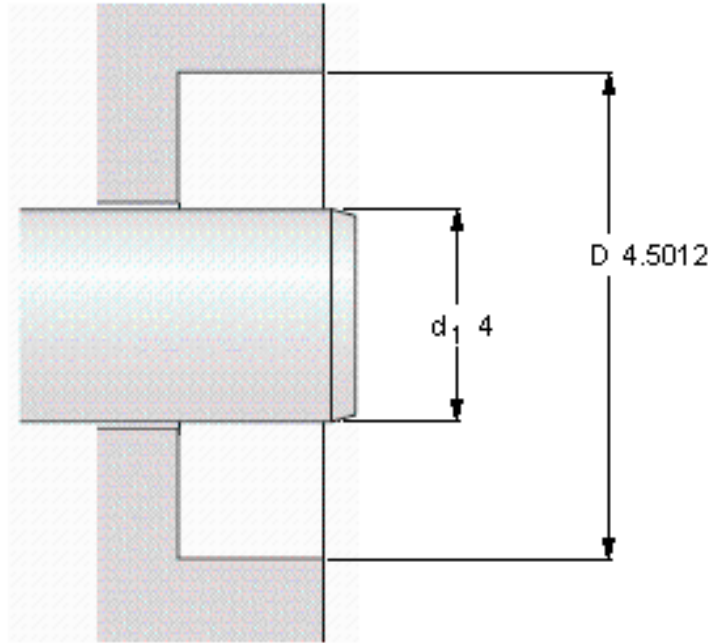
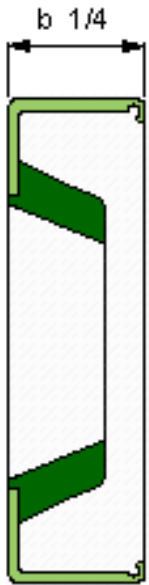
**Rotational speed [r/min]**

1128
<b>at circumferential speed [m/s / ft/s]</b>
6 / 19,68

**Pressure differential [MPa / psi]**

0,02 / 2,9

See also "Permissible speeds" and "Chemical and thermal resistance"



**Permissible operating temperature [°C / °F]**

最小	最大
-40 / -40	100 / 212
	short periods
	120 / 248

**Rotational speed [r/min]**

1128  
**at circumferential speed [m/s / ft/s]**  
 6 / 19,68

**Pressure differential [MPa / psi]**

0,02 / 2,9

See also "Permissible speeds" and "Chemical and thermal resistance"

参考资料:<http://www.sozhou.com/p/ead8d6b8.html>