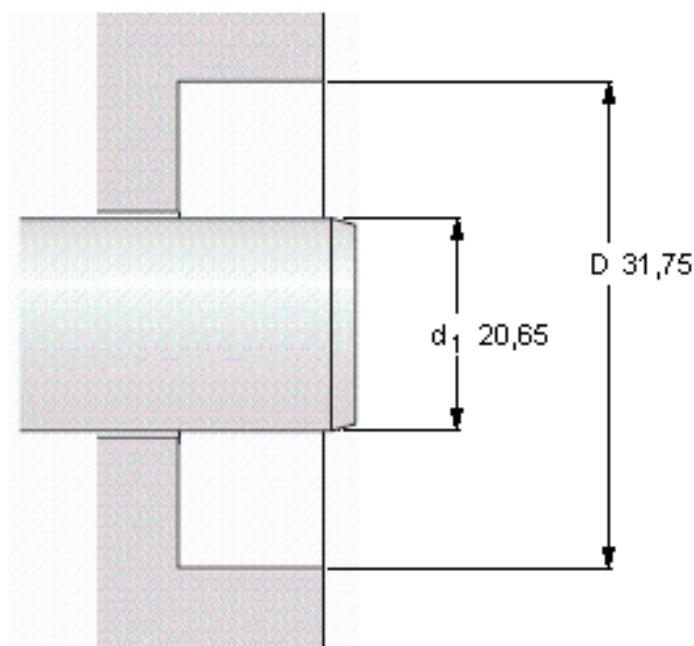


SKF 8017参数

主要尺寸	d_1	20.65	mm	—
	d_1	31.75	mm	—
	b	4.78	mm	—
设计	设计	CRW1	—	—
密封唇材料	密封唇材料	R	—	—
Pressuredifferential [MPa/psi]	Pressure differential [MPa / psi]	0.07	—	—
型号	型号	8017	—	—
美国图纸编号	美国图纸编号	8017	—	—

SKF 8017图片



Permissible operating temperature [°C / °F]

最小	最大
-40 / -40	100 / 212
	short periods
	120 / 248

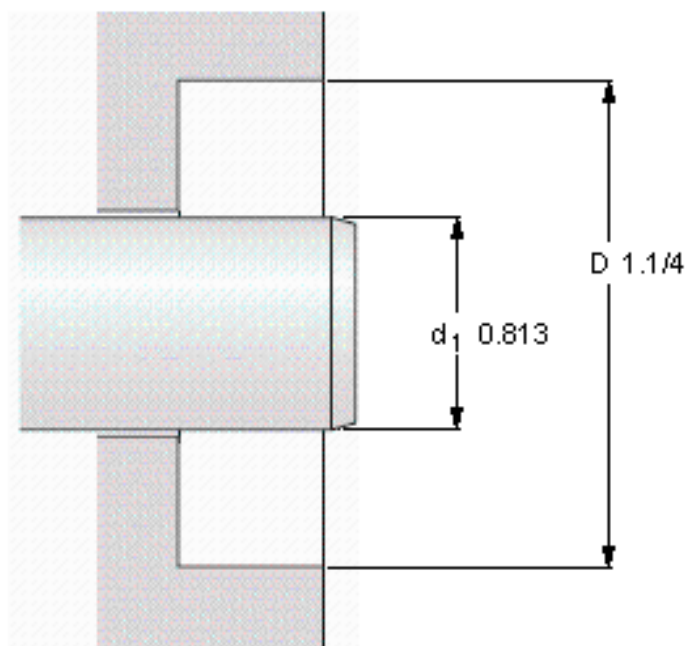
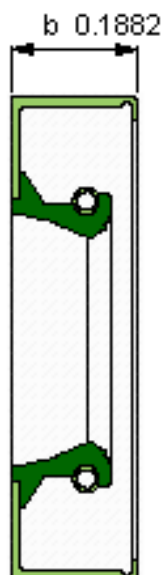
Rotational speed [r/min]

16648
at circumferential speed [m/s / ft/s]
18 / 59.04

Pressure differential [MPa / psi]

0.07 / 10.15

See also "Permissible speeds" and "Chemical and thermal resistance"



Permissible operating temperature [°C / °F]

最小	最大
-40 / -40	100 / 212
	short periods
	120 / 248

Rotational speed [r/min]

16648

at circumferential speed [m/s / ft/s]

18 / 59,04

Pressure differential [MPa / psi]

0,07 / 10,15

See also "Permissible speeds" and "Chemical and thermal resistance"

参考资料: <http://www.sozhou.com/p/fd9200cb.html>